

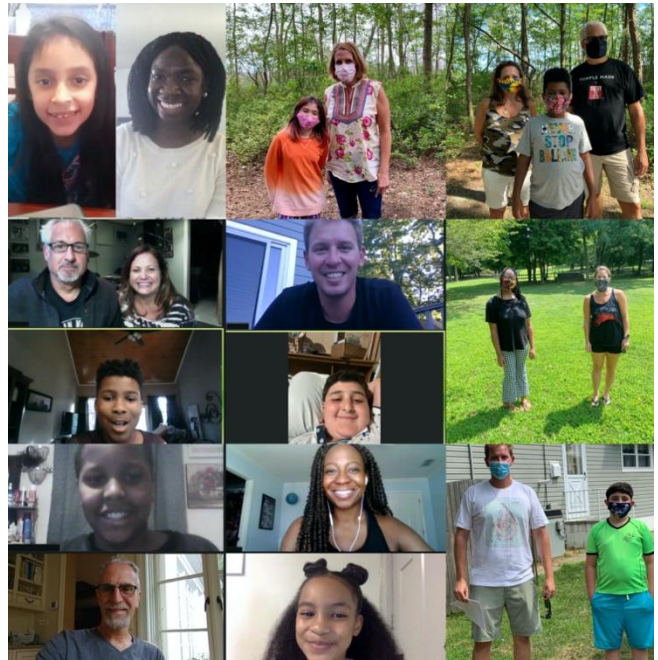
# **Big Brothers Big Sisters.** OF COASTAL & NORTHERN NEW JERSEY

## **ABOUT BIG BROTHERS BIG SISTERS**

BBBSCNNJ provides one-to-one mentoring for youth ages 6-18 through our Community Based, School Based, Workplace, College, Back on Track, and Bigs in Blue Mentoring Programs. By placing children in a quality mentoring relationship, we are able to provide them with the tools they need to become competent, confident, and caring members of their community.

We partner with parents/guardians, volunteers and others in the community and hold ourselves accountable for each child in our program achieving:

- Higher aspirations, greater confidence, and better relationships
- Avoidance of risky behaviors
- Educational success



Each time we pair a child with a Big Brother or Big Sister, we start something incredible - a one-to-one relationship built on trust and friendship that can blossom into a future of unlimited potential.

## **MENTORING WORKS**

Research shows that children with a Big Brother or Big Sister are more confident in their schoolwork performance, have better relationships with family and friends, and are less likely to skip school or use illegal drugs or alcohol.

## **NEED A BIG**

Most children in our programs are from single parent homes and may be experiencing emotional, social and academic challenges. All are from Bergen, Hunterdon, Middlesex, Monmouth, Morris, Ocean, Passaic, Somerset, Sussex, and Warren Counties and must be between the ages of 6-17 at the time of enrollment.

**If you are interested in enrolling your child, please inquire at [info@mentornj.org](mailto:info@mentornj.org) or on our website at [mentornj.org](http://mentornj.org)**

